



Ophthalmic YAG and SLT Laser System

YC-200 S plus

Ophthalmic YAG Laser System

YC-200



THE ART OF EYE CARE

# YC-200 YC-200

*Splus*

## Right on the Mark

"Precision treatments with the YAG/SLT laser"

NIDEK, a leading manufacturer of modern YAG lasers, introduces the advanced YAG and SLT combination laser, YC-200 S plus, and the enhanced YAG laser, YC-200.

A suite of technologies has been incorporated in these lasers to achieve seamless function and greater precision. Features for targeting pathology, accurate energy delivery, and operative assist functions allow the surgeon to deliver treatments "Right on the Mark".



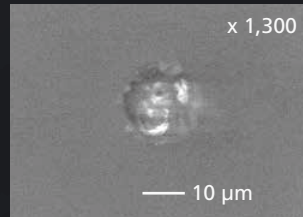
# Precise Treatment

## Refined Laser Delivery with Lower Energy

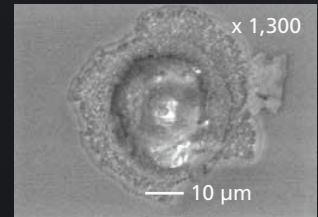
The YC-200 S plus / YC-200 achieves 1.6 mJ plasma threshold in air\*1, delivering accurate and robust treatments with lower energy.

# 1.6 mJ

Comparison of laser energy spots\*2 between the YC-200 and the previous model



YC-200



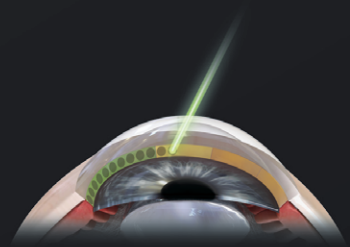
Previous model

\*1 A plasma threshold of 1.6 mJ is achieved in ordinary room conditions (in-house data).

\*2 The same laser delivery parameters were used on both samples of photo paper.

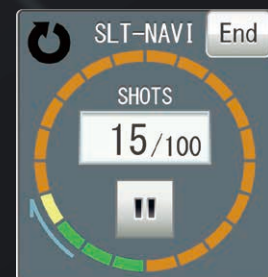
## SLT Mode

The YC-200 S plus offers an advanced SLT mode. SLT is highly effective for treating open angle glaucoma.



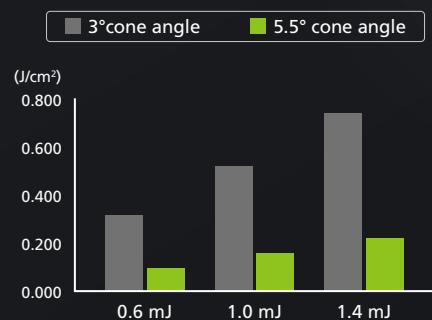
## SLT-NAVI

The SLT-NAVI feature presents an intuitive display on the progress of laser treatment, providing the surgeon with important feedback.



## Cornea-friendly SLT

With a 5.5° cone angle, the YC-200 S plus is designed to decrease energy density on the cornea to spare tissue from repeated treatments. The energy density on the cornea is reduced by more than one-third with a 5.5° cone angle compared to a 3.0° cone angle.



Comparison of energy density on the cornea\*

\*Data from theoretical simulations

# Exact Targeting

## Clear and Sharp Field of View

An improved optical design that optimizes resolution and contrast, and an expanded focal depth provide a clear view of pathology and treatment. A unique illumination system with an LED light source results in a bright, near-natural view that minimizes aberration. The sharp, clear optics provide an enhanced view of the treatment area.



## Precise Aiming Beam

### ■ Motorized Rotatable Aiming Beam (YAG Mode)

The dual aiming beam offers superior targeting with a 360° rotating aiming beam that can avoid corneal opacities and achieve more accurate focusing.



### ■ Precise Edge Aiming Beam (SLT Mode\*)

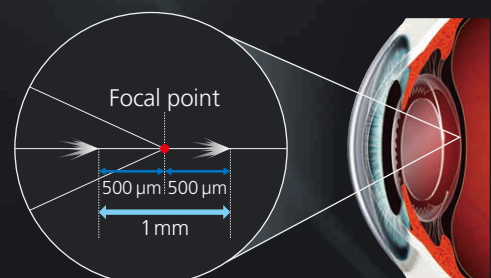
Parfocality delivers a clear view for easier focusing of the aiming beam through the contact lens.

\*Available for the YC-200 S plus



## Wide Range of Focus Shift

The focus shift enables a 500  $\mu\text{m}$  anterior or posterior axial shift of the focal point of the YAG laser. A change in 25  $\mu\text{m}$  increments achieves precise treatments irrespective of the severity of pathology.





# Smooth Operation Workflow

## Optimized Operating Distance

Maximized working distance allows easier manipulation of the contact lens, and the short operating distance decreases surgeon fatigue during treatment.

\*Operating distance denotes the distance from the microscope eyepiece to the patient's eye.



## Unique Joystick

### ■ Utility S-switch

The S-switch on the joystick changes treatment settings without shifting gaze from the oculars. The ease of use allows surgeons an increased level of comfort during treatment.

### ■ Remarkably Smooth Motorized Joystick

To enhance surgeon comfort, the YC-200 S plus / YC-200 includes the acclaimed motorized joystick used in other NIDEK devices.



## Optional Feature

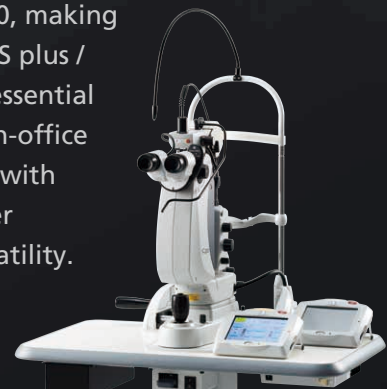
## Coaxial Illumination for Better Visualization

The optional split mirror illumination tower for the YC-200 S plus / YC-200 provides crisp and clear views with coaxial illumination for both anterior and posterior segments.



## Expanded Versatility

In addition to YAG and SLT, there are options for retinal photocoagulation with a combination delivery unit and the GYC-500, making the YC-200 S plus / YC-200 an essential device for in-office procedures with even greater clinical versatility.



## YC-200 S plus / YC-200 Specifications

Model	YC-200 S plus	YC-200
<b>YAG mode</b>		
Laser source	Q-switched Nd:YAG	
Wavelength	1,064 nm	
Pulse width	3 ns	
Pulse repetition rate	3 Hz (single) / 1.5 Hz (burst)	
Output energy	0.3 to 10.0 mJ / pulse	←
Burst mode	1, 2 and 3 pulses per trigger	
Spot size	8 µm	
Cone angle	16°	
Focus shift	0 to ±500 µm	
Aiming beam	635 nm / OFF, max. 25 µW	
<b>SLT mode</b>		
Laser source	Q-switched, frequency doubled Nd:YAG	
Wavelength	532 nm	
Pulse width	3 ns	
Pulse repetition rate	3 Hz	
Output energy	0.3 to 3.0 mJ / pulse	Not available
Spot size	400 µm	
Cone angle	5.5°	
Aiming beam	635 nm / OFF, max. 0.3 mW	
<b>Slit lamp</b>		
Illumination	LED lamp	←
Magnification (field of view)	5x (40.7 mm), 8x (25.7 mm), 12.5x (16.1 mm), 20x (10.1 mm), 32x (6.4 mm)	
Power supply	100 to 240 V AC, 50/60 Hz	←
Power consumption	100 VA	←
Dimensions/mass	346 (W) x 422 (D) x 577 (H) mm / 18 kg 13.6 (W) x 16.6 (D) x 22.7 (H)" / 39.7 lbs.	346 (W) x 422 (D) x 577 (H) mm / 17 kg 13.6 (W) x 16.6 (D) x 22.7 (H)" / 37.5 lbs.
Optional accessories	Foot switch, Optical table, Illumination tower (split mirror illumination), Stand for control box, Safety goggles, Green laser photocoagulator combination delivery unit (NIDEK GYC-500)	Foot switch, Optical table, Illumination tower (tilting / split mirror illumination), Stand for control box, Safety goggles, Green laser photocoagulator combination delivery unit (NIDEK GYC-500)

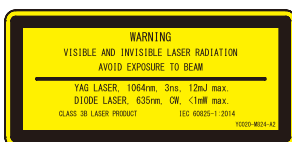
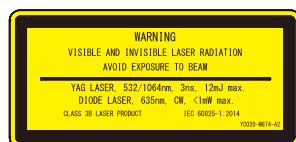


**More clinical information available online at the NIDEK Education page**

For more clinical information, please visit the Education page on the NIDEK website. This site allows access to case reports, journal articles, and video presentations.



<https://www.nidek-intl.com/education/>



Product/model name: OPHTHALMIC YAG LASER SYSTEM YC-200

Brochure and listed features of the device are intended for non-US practitioners.

The availability of products differs from country to country depending on the status of approval.

Specifications may vary depending on circumstances in each country.

Specifications and design are subject to change without notice.



**HEAD OFFICE [Manufacturer]**  
34-14 Maehama, Hiroishi-cho, Gamagori, Aichi 443-0038, JAPAN  
Phone: +81-533-67-8895  
Group Website [www.nidek.com](http://www.nidek.com)  
Product Information [www.nidek-intl.com/product/](http://www.nidek-intl.com/product/)

**Distributor in your country**  
Please contact our distributor for more information.  
[www.nidek-intl.com/dist/](http://www.nidek-intl.com/dist/)

